

Postgraduate Diploma in International Logistics and Supply Chain Management

MS111

Inspiring Your Future

Business Education @ **HKUSPACE**

SUPPLY CHAIN AND LOGISTICS MANAGEMENT



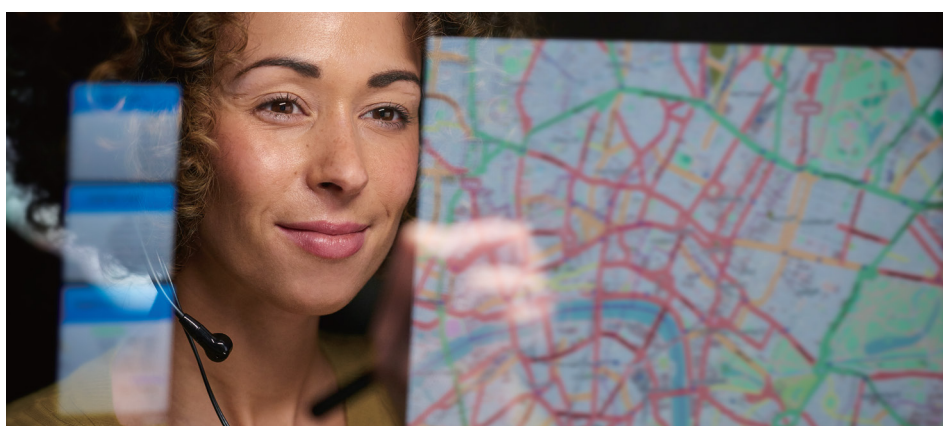


ABOUT THE PROGRAMME

This Programme aims to meet the continuing education and professional development needs of those who have considerable work experience in logistics and supply chain industries, or those who are interested to develop a career in these industries. The programme provides students with comprehensive understanding, knowledge and skills required for the business environment of international logistics and supply chain. It also

aims to enhance the professional competence of students with knowledge and technical capability to deal with the current issues in international trade, logistics, e-commerce and procurement.

Graduates may apply for admission to the top-up Master programme in International Logistics and Supply Chain Management offered by the University of Plymouth, UK.



Programme Structure

The programme consists of six modules, to be taught over 18 months.

Modules	Lecture Hours	QF Credits	HKQF Level
General Management and Current Issues for Supply Chain	51	21	6
International Trade, Procurement and Logistics	51	21	
Research and Information Management	54	18	
Operations and Strategy	51	21	
Global Supply Chain and Logistics Management	51	21	
e-Commerce and e-Logistics	54	18	
Total	312	120	6

Mode of Delivery

- Part-time study mode
- Duration : 18 months (minimum)
- Lecture Schedule - Saturdays (occasionally weekday or Sunday evenings)



TUITION FEE

\$49,500 payable by 3 instalments*

ENTRY REQUIREMENTS



Applicants shall:

hold a bachelor's degree or equivalent professional qualification(s) in a relevant discipline awarded by a recognized institution; and have two years of full-time work experience in related industries.

If the degree or equivalent qualification is from an institution where the language of teaching and assessment is not English, applicants shall provide evidence of English proficiency, such as:

- i) an overall band of 6.0 or above with no subtests lower than 5.5 in the IELTS; or
- ii) a score of 550 or above in the paper-based TOEFL, or a score of 213 or above in the computer-based TOEFL, or a score of 80 or above in the internet-based TOEFL; or
- iii) HKALE Use of English at Grade E or above; or
- iv) HKDSE Examination English Language at Level 3 or above; or
- v) equivalent qualifications.

Applicants with other qualifications or mature students with relevant professional and work experiences will be considered on a case-by-case basis.



QF Level : 6
QR registration No. : 18/000529/L6
Validity Period : 01/08/2018 to on-going

ENQUIRIES

Email: pgdipilscm@hkuspace.hku.hk
Tel: 2867 8323 / 2867 8393

Every effort has been made to ensure the contents of this brochure are correct at the time of printing. HKU SPACE reserves the right to update the contents of the brochure at any time without notice and this brochure does not form part of a contract between the students and the School. Information in the HKU SPACE website is the most up-to-date version and supersedes the printed brochure, wherever applicable.

HKU SPACE is a non-profit making University company limited by guarantee.

